



# The Original Surface Mounted Tactile Warning Surfaces



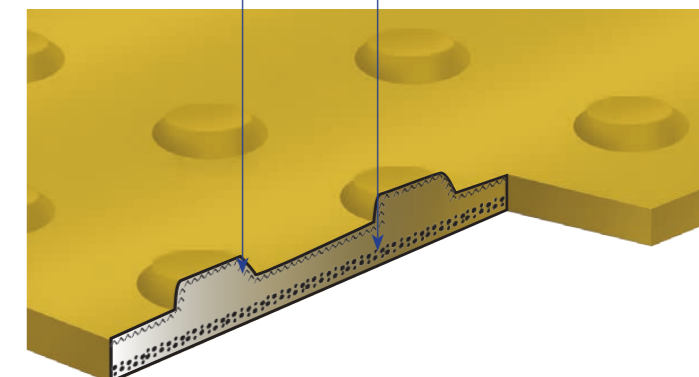
# About Surface Mounted Warning Surfaces

The only stick on tactile system with a tried and tested track record of over 15 years.

Patented technique ensures near perfect distribution of resin and special fillers within the tile construction

Heavy weight fillers increases wearing qualities 7 times more resilient than concrete

Lightweight fillers increases flexibility ensuring full contact with substrate



## About us

Since its formation in 2000 Visul Systems has established itself as a well-respected manufacturing company, offering a comprehensive range of surface mounted warning surfaces for use in transportation (highways, rail and light rapid transit (LRT)) and the built environment.

As part of the USL Group, Visul Systems supplies surface mounted tactile warning surfaces to numerous high profile projects. We take innovation seriously and believe that it is necessary for a manufacturing company to prosper.

Visul Systems has developed a reputation for manufacturing and supplying high quality resin based warning surfaces and adhesive systems. For further information visit our interactive website [www.visulsystems.com](http://www.visulsystems.com).

### Industry Accreditations and affiliations

Visul Systems recognises the importance of membership of industry-affiliated specialist organisations, allowing us to keep in close contact with the latest industry developments. Visul Systems work in partnership with architects, consultants and contractors to improve product technology, quality and performance, thus benefiting all stakeholders in all aspects of the project.

Materials are manufactured under the ISO 9001 Quality Management Scheme and comply with ISO 14001 Environmental Standards.

[www.visulsystems.com](http://www.visulsystems.com)



### Description

Visul tactile tiles are manufactured in-house on a patented assembly line to ensure near perfect distribution of fillers and resin ensuring excellent wearing qualities and built in flexibility.

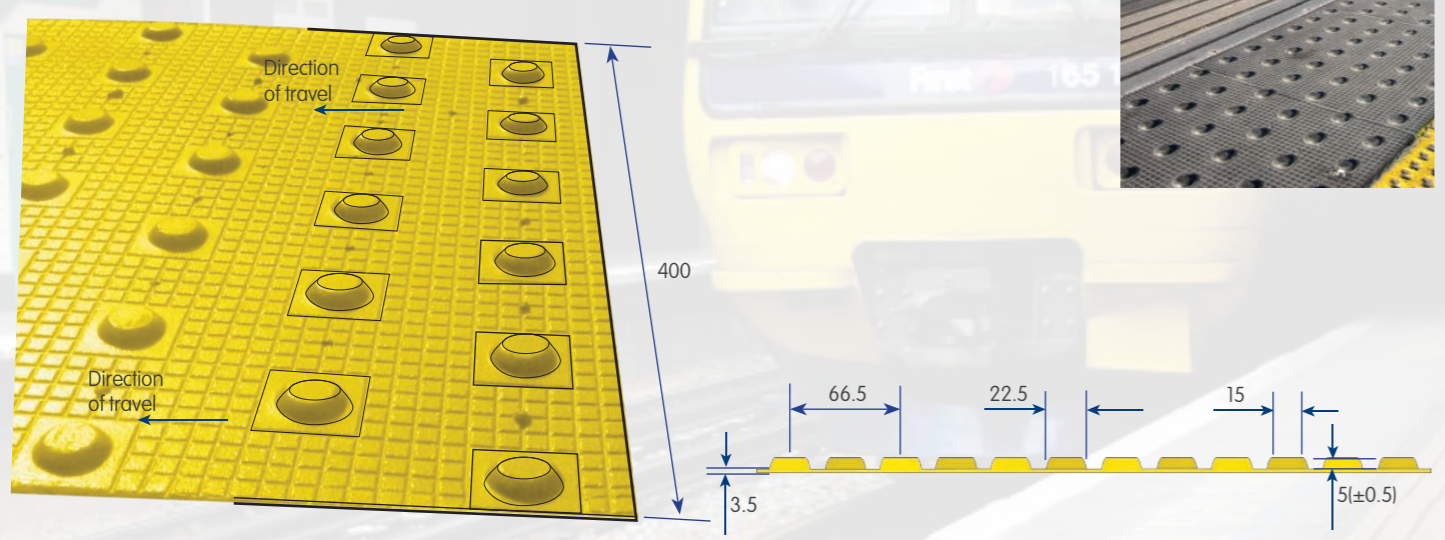
### System Benefits

- No surface excavation required
- Rapid installation
- Adheres to most construction surfaces
- Hard wearing and durable
- Lightweight and easy to transport
- No 'hot works' adhesive only application

### Product performance and Test Data

- Network Rail & London Underground approved for over 15 years – Trouble free record
- New improved formula
- Increased skid resistance
- The specifically formulated adhesive has been tested for adhesion by Nufins
- Tensile tests were performed and the failure mode for the vast majority of the test samples was within the base substrate
- Wear tested for durability
- UV stable
- Freeze/thaw tested
- Manufactured to strict QA criteria





Profile and plan of platform edge (off-street) warning surface  
Not to scale, all dimensions in mm

### Platform Edge (off-Street) Warning Surface

The purpose of this surface is to warn visually impaired people of the edge of all off-street railway platforms.

The profile of the platform edge (off-street) warning surface consists of offset rows of flat-topped domes 5mm (±0.5mm) high, spaced 66.5mm apart from the centre of one dome to the centre of the next.



### Applications:



HAZARD YELLOW, GREY, BUFF OR CHARCOAL

- Heavy rail platforms
- Off-street light rapid transit (LRT) platforms
- Underground platforms

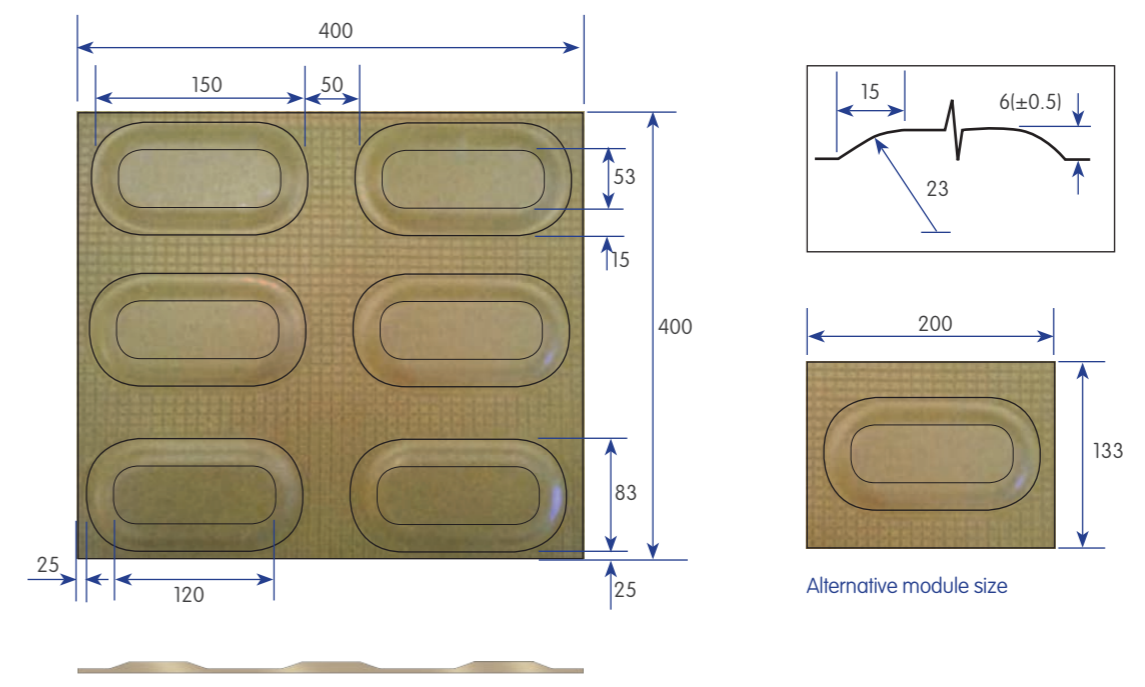
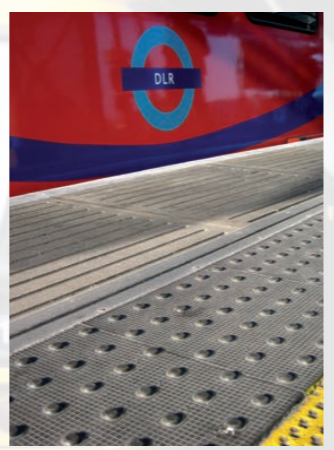
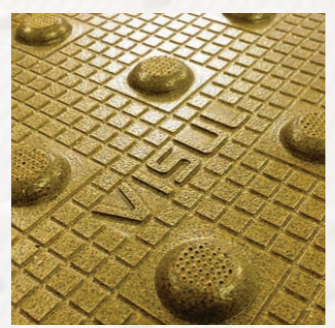
### Sizes:

- 400mm x 400mm
- 400mm x 600mm
- 400mm x 930mm
- 400mm x 1208mm
- 400mm x 1220mm

### New in 2016 - Safeguarding The Best From The Rest

Visul Systems have invested heavily in new manufacturing processes and are taking advantage of huge cost savings in raw materials. The benefits of being part of a large multi-national company have enabled Visul to offer the most competitively priced packages on the market for this type of product.

Visul tiles are the only tried and tested product with a trouble-free track record of over 15 years in both the rail and highway sectors. In January 2016 Visul Systems launched their new tile which is easily identifiable as it is embossed with the brand name 'Visul' - Safeguarding the best from the rest



Profile and plan of platform edge (on-street) warning surface  
Not to scale, all dimensions in mm

### Platform Edge (on-street) Warning Surface

The purpose of the platform edge (on-street) warning surface is to warn visually impaired people that they are approaching the edge of an on-street light rapid (LRT) platform.

The profile of the platform edge (on-street) warning surface comprises rows of 'lozenge' shapes. The lozenge shapes are 6mm (±0.5mm) high and have rounded edges in order not to be a trip hazard.

### Applications:



- For use at all on-street LRT platform edges

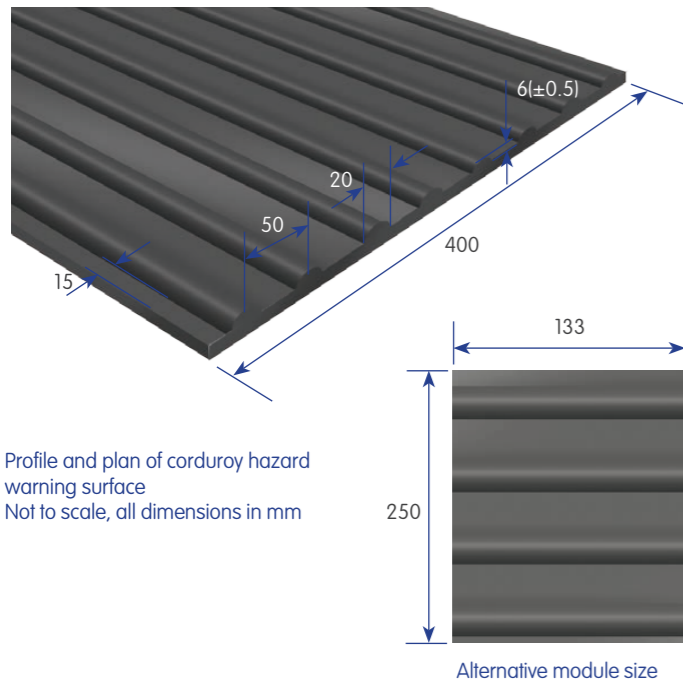
### Size

- 400mm x 400mm





# BUILT ENVIRONMENT

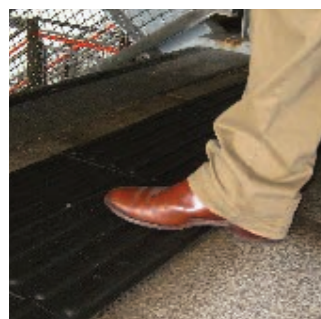


Profile and plan of corduroy hazard warning surface  
Not to scale, all dimensions in mm

## Corduroy Hazard Warning Surfaces

The purpose of the corduroy surface is to warn visually impaired people of the presence of specific hazards: steps, level crossings or the approach to on-street rapid transit (LRT) platforms. It is also used where a footway joins a shared route. It conveys the message 'hazard, proceed with caution'.

The profile of the corduroy surface comprises rounded bars running transversely across the direction of pedestrian travel. The bars are 6mm (±0.5mm) high, 20mm wide and spaced 50mm from the centre of one bar to the centre of the next.



### Applications:



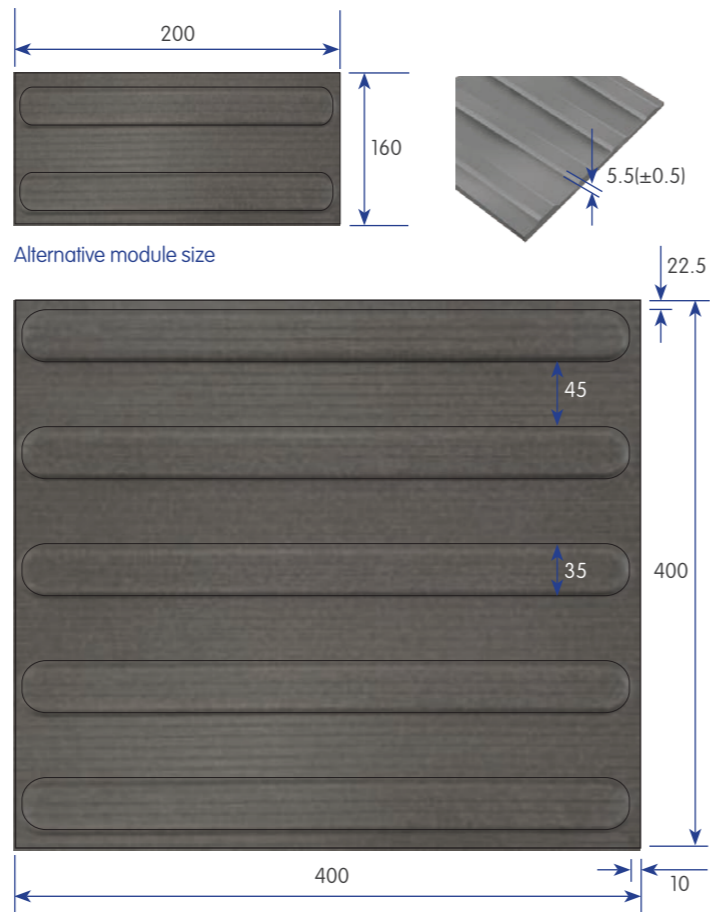
**BUFF OR CHARCOAL SHOULD BE USED**

- Tops and bottoms of stairs
- Foot of a ramp to an on-street rapid transit (LRT) platform, but not at any other ramps
- Level crossing
- Where people could inadvertently walk directly on to a platform at a railway station
- Where a footway/footpath joins a shared route

### Size

- 400mm x 400mm

Profile and plan of guidance path surface  
Not to scale, all dimensions in mm



## Guidance Path Surface

The profile of the guidance path surface comprises a series of raised, flat-topped bars running in the direction of pedestrian travel. The bars are 5.5mm (±0.5mm) high, 35mm wide and are spaced 45mm apart.

### Applications:

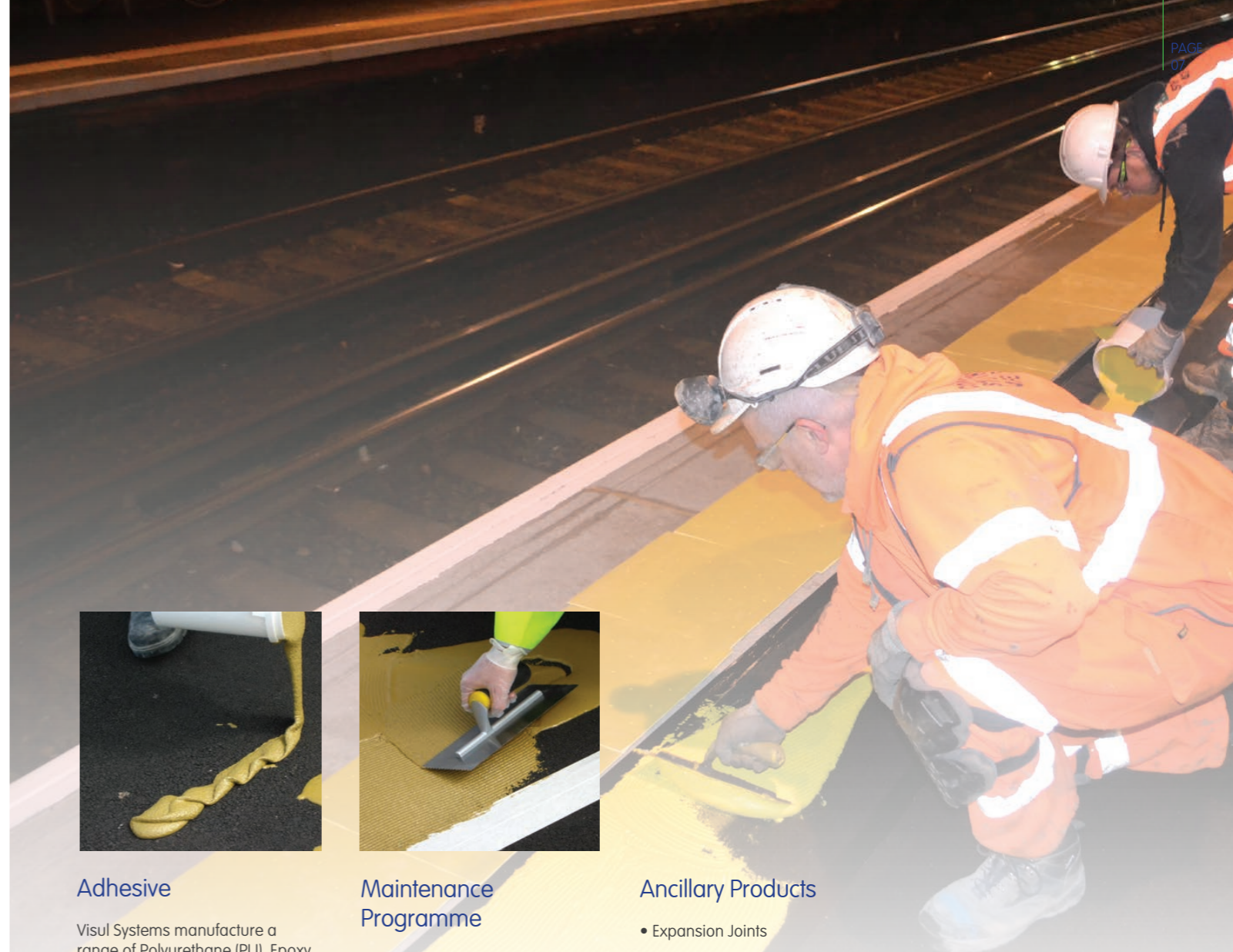


The guidance path is recommended for the use in the following circumstances:

- Where the traditional guidance given by a standard footway between the property line and carriageway does not exist (for example, in a pedestrian precinct);
- Where pedestrians need to be guided around obstacles (for example, in a pedestrian precinct): although care should be taken in siting street furniture to ensure that such problems are not created;
- Where a number of visually impaired people need to find a specific location; and in transport terminals to guide people between facilities.

### Size

- 400mm x 400mm



## Adhesive

Visul Systems manufacture a range of Polyurethane (PU), Epoxy (EP) and Methyl Methacrylate (MMA) adhesives with excellent bond strength and non-slumping characteristics making them ideally suited for bonding of surface mounted tactiles to construction surfaces/substrates.

Visul Systems tactile adhesive outperforms all other tactile adhesives in terms of strength, durability and cost.

- Non shrink
- No slumping, no primer required
- 100% adhesion to substrate
- Rapid curing
- Moisture tolerant (epoxy adhesive)

## Maintenance Programme

It is important to monitor the condition of the tactile surface and to plan for replacement as part of maintenance programmes. The profile of the tactile surface is crucial to its effectiveness as a warning to visually impaired people.

Visul Systems technical department is able to advise on suitable design and maintenance programs. Further technical information may be obtained on request and consultation is encouraged to ensure choice of materials selected and detailing is optimised to suit in-service performance requirements.

## Ancillary Products

- Expansion Joints
- Track bed
- Anti-slip surfacing for footbridges
- Substrate Repairs
- Copers
- Drainage channels



Visul Systems, Kingston House, 3 Walton Road, Pattinson North, Washington, Tyne & Wear, NE38 8QA, UK

t: +44(0)191 402 1960 f: +44(0)191 402 1906 e: [info@usluk.com](mailto:info@usluk.com)

[www.visulsystems.com](http://www.visulsystems.com)